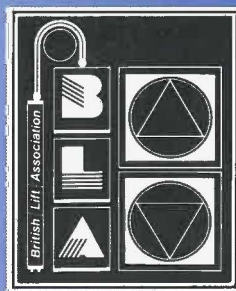




British Lift Association



OFFICIAL EXHIBITION SHOW GUIDE

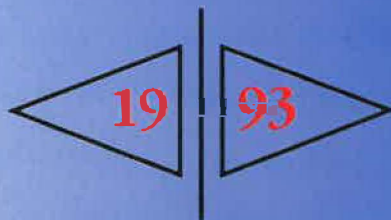
Wednesday 19th <|> *May 10.00am* <X> *6.00pm*

Thursday 20th <|> *May 10.00am* <X> *5.00pm*

*Exhibition Suite - Novotel London
1 Shortlands, Hammersmith, London W6 8DR*

5th

EXHIBITION





Welcome to the 5th British Lift Association Exhibition.

Once again, we are encouraged by the excellent support from the membership of the British Lift Association and I must congratulate them for their confidence in the British Lift Association and the exhibition, especially during a period of recession. Hopefully, this exhibition will give a degree of confidence to the lift and construction industry for the future.

The British Lift Association is in the process of organising seminars during the course of 1993 and there will also be considerable technical information forthcoming to members from the new Director, Mr. Bob Lee. Hopefully this will be of benefit to the lift industry in general.

British  Association

5th Exhibition



COMPANY

STAND NO

3 Map Lift Equipment Ltd	11
A & A Electrical Distributors Ltd	35
Alimak Ltd	12
Beringer Hydraulics	10
Bridon Ropes Ltd	20
British Lift Association	23
Datwyler (UK) Ltd	6
Dewhurst PLC	31
Drucegrove Ltd	13
Express Transformers & Controls Ltd	9
Formula Systems Ltd	14
F.S.C. Stainless & Alloys Ltd	5
Health & Safety Executive	29
Highfield Gears Ltd	17
Hydrax Ltd	26
International Lift Equipment Ltd	28
Jackson Lift Group Ltd	3
Lester Control Systems Ltd	18
Lift Components Ltd	36
Lifteknik Ltd	30
Liftmaterial (GB) Ltd	32
Lift-Tech Engineering	33
Major Lift Services Ltd	27
N.H.S. Training Centre	37
Propbrook Ltd	7
Pye (London) Ltd	16
Quality Lift Products Ltd	2
Rigidized Metals Ltd	22
Scott Fabrication Ltd	15
Shorts (Lifts) Ltd	8
Thames Valley Lift Company Ltd	25
The Service Lift Co. Ltd	24
Thyssen Lift Components	19
Trefil Europe UK Ltd	4
True Brothers Manufacturing Ltd	34
Wessex Medical Equipment Co. Ltd	1
Ziehl-EBM (UK) Ltd	21

Champagne suite

Reception



Hotel Reception →

Section 1

Section 2

Section 3

Main Hall



PHOTOGRAPH OF BLA MANAGEMENT COMMITTEE

From left to right: TOP ROW

John Trett:
Derek Lycett:
John Walding:
George Humphreys:

Formula Systems Ltd.
International Lift Equipment
Lift Components Ltd.
Cable Lift Installations Ltd.

From left to right: SEATED

Peter Stone:
Michael Ling - Vice President:
Fen Charlton - President:
Len Maple - Past President:
Bob Lee - Director:

Quality Lift Products Ltd.
Alimak Ltd.
F.S.C. Stainless & Alloys Ltd.
The Service Lift Co. Ltd.
British Lift Association

Association Officers:

President: F.D. Charlton
Vice-President: M. Ling
Director: R. Lee

Management Committee:

F.D. Charlton F.S.C. Stainless & Alloys Ltd
R. N.Lee British Lift Association
G. Humphreys Cable Lift Installations Ltd
J.D. Loftus Ebor Lifts Ltd
M. Ling Alimak Ltd
J. Trett Formula Systems Ltd
D. Lycett International Lift Equipment Ltd
J.R. Walding Lift Components Ltd
P. Stone Quality Lift Products Ltd
L. Maple The Service Lift Co. Ltd

Exhibition Committee:

Mrs A. Warren A & A Electrical Distributors Ltd
R. Williams Beringer Hydraulics
Miss K. Clifford Dewhurst PLC
J. Trett Formula Systems Ltd
L. Eden Hydrax Ltd
W. Butler International Lift Equipment Ltd
G. Lees Propbrook Ltd
M. Roe Rigidized Metals Ltd
L. Maple The Service Lift Co. Ltd
D. Warfield Thames Valley Lift Co. Ltd
K. Harrison Thyssen Lift Components
R. N. Lee British Lift Association

Technical Committee:

Chairman: R.N. Lee
Secretary: F. Waite

Standards Panel:

M. Ling Alimak Ltd
R. Gooden Coastal Lifts
P. Strickland Nesbit Evans Healthcare Ltd
G. Millen International Lift Equipment Ltd
T. Atkinson Lester Lift Services Ltd
S. Pradhan Deve Lifts (UK) Ltd

Statutory Panel:

M. Ling Alimak Ltd
R. Steele Wessex Medical Equipment Ltd
P. Strickland Nesbit Evans Healthcare Ltd
T. Atkinson Lester Lift Services Ltd
C. French Liftmaterial (GB) Ltd

Domestic Panel:

E. Moss Mavercourt Ltd
T. Atkinson Lester Lift Services Ltd
S. Pradhan Deve Lifts (UK) Ltd
C. French Liftmaterial (GB) Ltd
D. Falk Dewcroft Engineering Ltd
R. Steele Wessex Medical Equipment Ltd
P. Strickland Nesbit Evans Healthcare Ltd
G. Lees Propbrook Ltd

Contracts Committee:

A.C. Digby Alan Digby Associates
R.N. Lee British Lift Association
S. Brown Guideline Installations Ltd
J. Laroche Jackson Lift Group Ltd
P. Stone Quality Lift Products Ltd

Resources Committee:

R.N. Lee British Lift Association
F.D. Charlton F.S.C. Stainless & Alloys Ltd
L. Maple The Service Lift Co. Ltd
C. French Liftmaterial (GB) Ltd
W. Jennings & Associates

Social Committee:

Mrs A Warren A & A Electrical Distributors Ltd
J.R. Walding Lift Components Ltd
Mrs V. Maple The Service Lift Co. Ltd

Golf Section:

G. Humphreys Cable Lift Installations Ltd
C. Lewis, Jnr Industrial Lift Services Ltd

The objectives of the BLA are to stimulate co-operation in the handling of all matters in connection with the manufacture, installation, repair and maintenance of lifts, escalators and other associated equipment in the UK.

Qualifications for Membership

Regular members must be employers of personnel directly connected with the manufacture installation, repair and maintenance of lifts, escalators or associated equipment in the UK. There are three classes of Regular Membership the basic qualifying requirements for which will be:

CONTRACTOR MEMBERSHIP. The Contractor Membership is composed of Companies and firms regularly and substantially engaged in the business of selling, installing and servicing vertical and horizontal handling and other equipment incident thereto (commonly known as passenger goods or service lifts, escalators, man-lifts, moving walks, etc).

SUPPLIER MEMBERSHIP. The Supplier Membership is composed of Companies or firms regularly and substantially engaged in what is known in the lift industry as supplying components, accessories or services for vertical and horizontal handling and other equipment incident thereto (commonly known as passenger, goods or service lifts, escalators, man-lifts, moving walks, etc).

DUAL CONTRACTOR - SUPPLIER MEMBERSHIP. Contractors who solicit or are regularly engaged in supplying components or accessories for vertical and horizontal equipment as described above, either in its own company name, a subsidiary, affiliate or a company in which it has an interest shall maintain a dual Contractor-Supplier membership in the name of such company or companies or apply for membership as a supplier.

Suppliers who solicit or are regularly engaged in selling, installing or servicing vertical horizontal handling equipment as described above, either in its own company name, a subsidiary, affiliate or a company in which it has an interest, may choose to maintain dual Contractor-Supplier Membership. Supplier firms holding a dual membership shall be permitted to hold office in a Supplier member status only.

In order to qualify, an applicant for Contractor or Supplier membership must meet the following requirements:

Must have been engaged in business as a Lift Contractor or Supplier, at least two years prior to the date on which application is made.

Must have an established place of business.

Must subscribe to the principles, and, wherever possible in practice, comply with current British Standards and Code of Practice for Lifts and Escalators, or other codes or ordinance having applicability.

Must have an acceptable credit rating.

Must subscribe to the purposes of the Association, and be willing to accept committee assignments and other work to further its ends.

The officers who apply on behalf of a firm or corporation must be actively engaged in its business.

An **ASSOCIATE MEMBER** shall be affiliated with the lift industry. He shall not be actively engaged in the business of the manufacture, installation repair or maintenance of lifts escalators and associated equipment.

An **HONORARY MEMBER** shall be one who has been an active representative or member of the Association and has discontinued his commercial activities in the lift industry. An honorary member shall be permitted to attend meetings of the Association in a social capacity only. He shall not be permitted to vote nor be required to pay membership fees. Only regular members shall be entitled to vote at the Association's meetings.

3MAP LIFT EQUIPMENT LTD

STAND 11

3MAP LIFT EQUIPMENT LTD is a partnership of several of Europe's leading manufacturers of component parts for the lift trade. A combined experience of more than 100 years trading means that we are in an excellent position to provide a well informed and competent service to the lift industry in the UK. Being owned directly by our manufacturers means that our clients benefit by dealing directly with the factories, rather than with their representative or agent.

Our wide range of services cover component supply from our Wembley warehouse where stock items include anything from guide clips and guide rail (both UK and continental profiles) to doors and sling kits. Project and design work for our lift packages is all done in Wembley, thus giving complete flexibility of layout and presentation to our customers.

3MAP LIFT EQUIPMENT LTD provides a high level of service both to the larger national lift companies, as well as being 'user friendly' to the smaller organisations who may not have the drawing office facilities or technical back up that we can offer. Our policy of continued improvement and expansion in the UK will ensure that 3MAP becomes as highly regarded here as our associated companies are on the Continent.

A & A ELECTRICAL DISTRIBUTORS LTD

STAND 35

We are now celebrating ten years' establishment as an industrial Electrical Distributor and we are known nationally for our strong links with the lift industry, not only as suppliers to the trade but for our information and advice services of which we are justly proud.

We also pride ourselves on our efficient, speedy and FREE delivery service within the M25 area for which we are very conveniently situated, and we also offer next day delivery to the rest of the U.K.

STOCK PROFLE

Car Top Controls / Hand Winding Units / Emergency Units / Half Way Boxes / Lift Trailer / Push Buttons / Gate Locks / Mains Cable / Conduit / Trunking / Rubber Matting / Bells / Bulkheads / Signs / Alarm Supplies / Dewhurst/ etc. etc.

**We aim to provide all the electrical requirements
for the
Lift Installation and Service Trade
with the
MINIMUM of fuss and the MAXIMUM efficiency**

ALIMAK LTD**STAND 12**

Alimak Limited - part of the Alimak Group of Companies with World Wide representation founded 45 years ago - are established as World leaders in vertical transportation in passenger and goods lifts using the proven rack and pinion system and more recently have introduced specialist lifts in the traction and hydraulic field.

This year Alimak Limited is pleased to celebrate it's 25th year of successful business in the United Kingdom.

Passenger and goods lifts, goods platforms, temporary hoists for construction purposes all based upon our rack and pinion drive form the core of Alimak's production.

Alimak rack and pinion units can operate internally or externally without the requirement of a load bearing shaft and can easily be relocated or extended. Also now added to the Alimak range of lifts are traction and hydraulic units similarly to a high specification and for use in all environments.

The range of Alimak Lifts is available in capacities ranging from 400kg to 10 tonnes, any known sophisticated modifications can be fitted. Lifts for hazardous/aggressive environments, firefighting and normal use can be designed, installed, tested and commissioned to BS 5655 and BS 5588 Part 5.

Modifications, and refurbishments together with short - medium - long term maintenance facilities are available, backed by a comprehensive spare parts stock holding and a Nationwide service team.

Alimak systems have been used on many World-wide famous landmarks:-

St Pauls Cathedral • The Eiffel Tower • Statue of Liberty • New Parliament Buildings - Canberra • Canary Wharf • Channel Tunnel • and many offshore locations.

Contact: Terry Brown, Michael Ling, John Vaggers

for further information.

BERINGER HYDRAULICS**STAND 10**

BERINGER are internationally recognised specialist suppliers in the field of lift hydraulics. Know-how, quality and flexibility are the corner stones of their advanced technology. Through constant expansion and future orientated research and development, BERINGER are able to offer a complete range of hydraulic equipment suitable for all applications.

The electronically controlled lift valve system (LRV) is the best known example of BERINGERS advanced technology. The combined advantages of electronics and hydraulics provide the ultimate in ride comfort and offer greater flexibility in varying environments. Its performance, setting highest standards of comfort, regardless of viscosity and load, is unequalled on the market.

The product line of BERINGER covers three divisions:-

- Lift Hydraulics
Submerged Power Units, Cylinders, Lift Control Valves and Accessories
- Industrial Hydraulics for
Mobile Cranes, ship cranes, winches and mining machinery
- Specialised hydraulics such as High voltage circuit breakers, etc.

BRIDON ROPES LIMITED**STAND 20**

Bridon Ropes Limited, the principal operating company of the worldwide Bridon Group, offers a comprehensive range of steel wire ropes and associated products specifically designed for use in the elevator industry. With 15 Distribution Units and 2 Service Centres strategically located around the U.K., Bridon Ropes Limited is able to offer a very quick delivery service along with full technical support and application advice to all its customers.

Products: Sales/Hire - Wire ropes and terminations - Brilube service dressings - Wire rope, fibre and chain slings - Electric hoists - Pul-Lifts, lever hoists and hand chain blocks.

Tirfors and Tirvits - Shackles and eyebolts - Hydraulic jacks - Shifting skates - Test weights and cradles.

Services: Inspection, repair and testing of lifting equipment - On-site testing of lifting beams - Product training - Application advice - Technical support.

Bridon Ropes Limited is registered to BS 5750:Part 2:1987/EN29001 - 1987 Quality Assurance Approval. This ensures that traceability throughout manufacture has been independently assessed and approved, thus giving the fullest confidence in the end product.

Bridon, the world's foremost ropemaking Group with over 50 companies established in some 20 countries, develops and manufactures a wide range of materials in high carbon, stainless and alloy steels, high performance fibres and composites. From these Bridon makes and markets an unparalleled variety of steel wire products, wire and fibre ropes, structural strand, high strength tension members and specialised lifting equipment.

Quality is our strength - Strength is our business

DÄTWYLER (U.K.) LTD**STAND 6**

Marketing Contact Peter Spratt

Engineering Contact Geoff Brewer
Peter Spratt

Sales Office Lynda Palmer
Patsy Butler

COMPANY PROFILE

UK Sales and Distribution office of a major Swiss cable manufacturer providing an ex-stock range of elevator travelling cables, hoistway, fixed wiring cables, Data and electronics cable.

PRODUCTS

Lift Travelling cables by Drum Quantities as well as cut to length and terminated travelling cable. Fixed wiring and hoisting cables and data/electronics cables.

SERVICES PROVIDED

Standard and special cables held in stock, cables cut to length as well as terminated for direct installation. Cables delivered over a wide area. BS5750 Part 1 Company Lift cables tested to BS6977-1991. British Standard Kite Mark Licenced.

DEWHURST PLC**STAND 31**

This year's BLA Exhibition is a very special one for Dewhurst plc, because never before have we exhibited so many new products.

Although at the exhibition we will be focusing on the new products, we continue to successfully market throughout the world, our wider range of lift components including Gatelocks, Overspeed Governors, Shaft Switches, Door Operators and Microprocessor Controllers.

Some of the New Products on the Dewhurst Stand you will be able to see include:

Pushbutton/Indicators.

For the first time since the launch of the highly successful US81 range, we will be launching a completely new range of Pushbuttons and Indicators.

Digital Display Units.

Following the launch of the one character CELL Display we have now completed the update of our range with the introduction of the CE12 and CE52 Digital Display Units.

RELCOM - Remote Lift Monitoring.

The launch of a new Database Package to optimise the benefits of this excellent system.

Dewhurst - GMV Lift Hydraulics.

GMV have recently launched a wide range of new products including the ER3100 Electronic Valve System.

Quality is designed into every Dewhurst product. Our successful certification of BS5750 Part 1 reflects our commitment to uncompromising quality standards.

DRUCEGROVE LIMITED**STAND 13**

Drucegrove Limited has enjoyed steady growth since establishment and are celebrating their Tenth Anniversary as specialist supplier to the Lift Trade. As a result of continued expansion, Drucegrove Limited now operate from new premises close to junction 26 on the M25 motorway and have convenient access to all the London Airports.

On offer is a comprehensive range of Electronic Safety Edges, Standard and Custom-made Faceplates, Car Operating Panels and Back Boxes together with Dot-Matrix indicators, Annunciator Units, Intercom Units, digitised Speech Units, Hall-Lantern Arrows (LED and Incandescent Lamp) and Single Stroke Gongs. Faceplates are manufactured to accept these products and most types of Buttons available today. A complete assembled package can be provided with Engraving and/or Braille as required.

Drucegrove Limited are stockists of the Formula Systems products.

Sight Guards or Fixing Brackets can be provided with the Electronic Safety Edges.

Speaker Housings etc. can be provided with Digitised Speech Units.

Power Supply Units, Encoder Boards and Interface Boards can be supplied with the Dot-Matrix Indicators.

Special Signs and Indicators are made to the Customer's specification.

EXPRESS TRANSFORMERS & CONTROLS LIMITED**STAND 9**

Company formed in 1953 and situated in a 20,000 square foot factory at Runcorn, Cheshire.

We specialise in the manufacture of transformers and chokes for the elevator, medical, scientific and other specialist industries together with a range of resistors from 130W to 450W 24 resistances per range and five ranges. Associate Company, Express Transformers Distribution Limited formed in 1985 for the purpose of stocking a standard range of 48 types of transformer for off the shelf delivery.

PRODUCTS/SERVICES

Single and 3 phase transformers and chokes including ferrite products for switch mode applications, range of transformers and chokes from IVA up to 300KVA all manufactured to your Specification, enclosures can be fitted if required i.e. ventilated or weatherproof.

For all your standard and non-standard requirements contact Express Transformers and Controls Limited together with the associate Company Express Transformers Distribution Ltd. Technical literature available on all products including resistors.

F.S.C. STAINLESS & ALLOYS LTD**STAND 5**

The company offers a service for the manufacture and supply of decorative stainless steel in sheet form. For many years the company has specialised in the supply of sheet material with many varied applications in the building industry. A wide choice of surface and colour is available.

Patterning of steel offers the following advantages: it provides many attractive possibilities in interior decor; it strengthens the material, allowing a lighter gauge of steel to be used for a given application; it obscures scratches and blemishes that would be very disfiguring on smooth steel; it makes graffiti-writing almost impossible and, as the patterning is one side only, the reverse may be fixed flush on to a substrate.

FORMULA SYSTEMS LTD**STAND 14**

FORMULA SYSTEMS LTD was incorporated in 1983 to design and manufacture unique modern day electronic controls and modules using the very latest 'state of the art' electronic technology. The products are designed to allow for the most advanced and sophisticated control to be introduced to high and low volume uses very economically.

Formula Systems Ltd manufactures the most advanced fully automatic safety edges, floor position indicators, touch buttons, speech units and lift monitor units for the lift industry and also controls and sensors for a wide variety of other fields including the marine trade, the washroom, MoD and British Rail.

On show are our MANSAFE continuous non touch safety edges with photoeye and the new SAFESCREEN 47 and 47 PLUS beam multi photo-eye units. Also our Compact indicator which can scroll messages and 'roll over' between floors, touch button, speech unit and lift monitor unit.

Formula Systems Ltd operates from a new factory at Witney, Oxford, UK. It has a large production team producing many thousands of units per annum. Strict attention is paid to quality control and reliability. 100% inspection and ATE test is applied to every unit. Units are available to BSI, ATL, UL and CSA approvals.

HIGHFIELD GEARS LIMITED**STAND 17**

A Private Limited Company - Established in 1927. Offering - winding packages for all applications, standard and special gear drives, repair service for geared products.

Highfield are the third largest independent manufacturer of worm geared products in the United Kingdom and founder members of the British Gear Association. From our West Yorkshire base, we operate extensive sales and service cover throughout the Home Market, Western Europe and North America.

We possess the most advanced manufacturing technology centre having an ongoing programme of high investment in Computerised Numerical Control Machine Tools, Computer Aided Design and Sophisticated Metrology.

We come to the 5th BLA Exhibition as the United Kingdom Market Leader in our field and looking forward to meeting you.

HEALTH AND SAFETY EXECUTIVE**STAND 29**

The Health and Safety Executive (HSE) is charged by the Government with protecting the health and safety of employees and others, who may be exposed to risks from industrial activities. This includes protecting employees and others from risks associated with maintenance of, and travel by, lifts and escalators.

HSE inspectors are responsible for enforcing health and safety in undertakings such as factories, building sites, railways, chemical plants, refineries, farms, fairgrounds, mines, quarries, offshore installations, and nuclear installations. Other non-domestic premises are inspected by local authority environmental health officers. All inspectors, environmental health officers and industry generally, can call for advice on technical matters affecting health and safety from Technology and Health Sciences Division (THSD) within HSE. THSD employ medical practitioners, engineers and scientists who each specialize in a particular subject (such as lift and escalator engineering) and who aim to keep up-to-date with the accident trends associated with the subject and with relevant technical developments. The specialist employees also assist in the drafting of British, European and International Standards.

If HSE identifies matters involving safety that cause concern and are not already being adequately addressed, then it will draw attention to these by means that are in keeping with the circumstances. One of the means used is to prosecute an alleged offender in a Court of Law; another is to publish 'guidance leaflets (notes)'; and yet another way is by exhibiting at trade exhibitions such as those held by the British Lift Association.

HYDRAX LTD**STAND 26**

Situated just south of Bristol, Hydrax Limited has been manufacturing high quality cylinders for many years. Demand for our single stage displacement lift cylinders continues to escalate and our success in supplying these cylinders to the lift industry has been built upon a foundation of service, reliability and flexibility.

We manufacture a wide range of displacement cylinders with solid or hollow rods with varying wall thicknesses to suit every application.

In recent years, the design and development of synchronized cylinders has created a great deal of interest and these have been successfully implanted into the market place.

In endeavouring to provide the complete package, we also supply power packs, using air-cooled or submerged motors with valves supplied by the market leaders in this technology.

Hydrax Limited has the technical expertise and capability to offer the complete hydraulic service to the lift industry and with a commitment to quality, has reached the final stages of qualifying to BS5750 Quality Assurance.

INTERNATIONAL LIFT EQUIPMENT GROUP LTD**STAND 28**

International Lift Equipment is amongst the well established lift companies in the U.K. The Company's success lies in its policy of which the following are foremost.

QUALITY OF PRODUCTS

Our careful selection and testing of the products which are supplied, ensures that we supply only the highest quality components available, if we cannot source products which meet our requirements, then we will endeavour to design and manufacture ourselves at our Electrical and Mechanical Manufacture plant in Leicester.

EXTENSIVE STOCKING

International Lift Equipment ensure that all popular products are held in stock, this is constantly re-assessed to meet the demands of our customers, we are aware that delivery time is an important factor in today's market.

COMPETITIVE PRICING

Our pricing policy is subject to constant review, based on cost effective purchasing, bulk buying and manufacturing processes.

QUALITY OF SERVICE

International Lift Equipment provides a full service to the Lift Industry in all areas - sales, engineering advice, drawing by Cad/Cam, on site assistance, training, plant hire and trade counter.

We hope your visit to the BLA Exhibition is pleasant and informative -which will be ensured when you visit Stand 28.

JACKSON LIFT GROUP**STAND 3****JACKSON LIFT SERVICES LTD**

We are the largest independent Lift Service Company based in London and the South East. We carry out planned maintenance on all makes and models of lifts, together with a large 24 hour radio controlled lift breakdown and repair facility. Specialists in quality, but competitive comprehensive maintenance on large multi group high speed lift installations.

JACKSON LIFT INSTALLATIONS LTD

Specialists in quality, competitive installations, offering the full range of electric traction, hydraulic passenger and goods lifts, plus a high quality refurbishment and reconstruction facility. No two projects can be exactly the same, therefore each installation is designed and manufactured to the client's specification. We provide full technical advice and support in this respect. Our reputation in providing an excellent on programme installation at a competitive cost, has been proven over many years.

JACKSON LIFT GROUP

Our satisfied client list include many of the United Kingdom's largest Blue Chip Companies, Retail Groups, Banks, Insurance and Media Companies, plus Government and Local Authorities.

Our policy of personalised service with products, services, computerised administration, tailored to a particular client's needs, now well established since 1979, remains an important facet of our companies.

LESTER CONTROL SYSTEMS LTD**STAND 18**

We have progressed ahead of all expectations as one of the UK's largest independent manufacturers of lift control equipment.

Operating from our factory in South London, we are now able to offer customers up to three car group systems AC or DC driven. Simplicity and ease of installation have helped towards our controllers becoming commonplace throughout the country. Our ability to design and manufacture control panels in very short delivery spans has won us many contracts. The flexibility within our organisation has placed us in good stead for future years.

A continuation of heavy investment and R & D have enabled the company's portfolio to now include: Fault Logging, Load Monitoring, a revamped Tape Head, two different types of Car Top Control Units as well as Hand Winding and Alarm Charger Units.

Our main core of business continues to be controllers for the once again growing Hydraulic market and the ever consistent Refurbishment market. Major projects like Duplexes, Gearles, ACVV and VF panels are becoming ever more commonplace.

We look forward to seeing you at our second BLA Exhibition.

LIFT COMPONENTS LTD**STAND 36**

The trade mark of Lift Components is the superior quality of Lift Equipment supplied. This is coupled with the importance given by our staff to offering a reliable speedy supply service which is second to none. The clients' needs are Lift Components' projects. We are the authorised distributor of Express Lift Co Ltd and Adams Elevator Equipment. This combination enables us to manufacture major items of lift equipment including gears, customised fixtures and various manufacturers' replacement parts such as Otis, Schindler and Hammond & Champness.

LIFTEKNIC LTD**STAND 30**

Lifteknic Limited is a young, progressive company supplying the UK Lift Industry with a complete range of both mechanical and electrical equipment from the world's leading manufacturers. As well as being a Distributor for many major manufacturers, Lifteknic also manufactures its own extensive range of products including Tapeheads, Digital Indicators, Emergency Light Units, Speech Synthesizers and the Com-Tek 80 Microprocessor Control System which, with its high level language software, make it the most advanced Lift Control System in its class. Lifteknic has its own in-house design team which is currently working on many new products using the very latest technology available, to offer its customers quality and reliability. This rapidly growing company is undoubtedly one of the U.K's lift equipment suppliers and manufacturers of the future.

LIFTMATERIAL (G.B.) LIMITED**STAND 32**

LIFTMATERIAL (GB) LTD - Probably one of the most advanced lift components and complete lift supplier to the lift industry. We commenced operations in the UK in 1972 following in the footsteps of our founder and parent company Liftmaterial GmbH of Munich, West Germany.

The group export to all areas of the world, but **LIFTMATERIAL (G.B.)** concentrates on the domestic market, fully supported by our own Engineering facilities, and also those of our parent company. **LIFTMATERIAL (G.B.)** supply both the small lift installation and repair companies and National companies, giving a supportive service on all aspects of their supply, before and after installation. We have available our own after-sales field Engineers, should they be required, who are fully trained by our main Manufacturers.

LIFTMATERIAL (G.B.) LTD occupies an area of approximately 12,000 square feet of modern offices and warehouse, stocking most components and spares for immediate despatch. Our staff are always pleased to offer help and assistance on technical problems and availability of materials.

It is our continual endeavour to provide the best service to our customers.

MAJOR LIFT SERVICES LIMITED**STAND 27**

Established in 1985, MAJOR LIFT SERVICES specialise in providing total support to the lift industry.

The four main areas of operation are:

1. LIFT INTERIOR REFURBISHMENT
2. PREFABRICATION
3. ELECTRICAL INSTALLATION
4. BUILDING WORK

Our lift refurbishment section will undertake all aspects of aesthetic lift improvement, with a design facility to provide drawings for approval.

The electrical section is N.I.C.E.I.C. approved and is able to carry out all types of electrical installation, from sub-main replacement to lift shaft lighting.

We supply all types of prefabricated lift equipment including doors, architraves and lift car enclosures, manufactured from a variety of materials (including timber cars). A fitting service is also available to re-wrap architraves and erect shaft internal cladding and enclosures.

The building section are members of the Guild of Master Craftsmen, and provide a complete service allied to lift modernisation and installation.

All our skilled personnel are fully trained and experienced in their particular disciplines and each section is managed by a professional in that field of operation.

We believe we are one of the few companies in the industry providing such a comprehensive and cost effective range of services, incorporating flexibility which enables them to be tailored to your individual requirements.

NATIONAL HEALTH SERVICE TRAINING AND CONFERENCE CENTRE**STAND 37****EASTWOOD PARK**

Eastwood Park has, for many years, been the Training Centre for the NHS and while the NHS remains our principal client, all courses and facilities are open to non-NHS and overseas students. Eastwood Park is a residential training centre conveniently situated approximately 17 miles north of Bristol (junction 14 of the M5).

The staff of the Engineering Department have been running courses on Lift Servicing and Maintenance since 1979. The facilities offered during the course are:-

- 3 floor purpose built lift tower fitted with a 6 person, two speed electric traction lift
- 3 floor hydraulic lift installation

- A wide range of lift simulators and equipment representing various manufacturers
- Fully equipped lecture room within the lift training building
- Resident tutors, with both technical and teaching experience

With the wide range of equipment, trainees can learn by "hands-on" experience in a realistic, safe environment without risk to themselves or others, and without disruption to users.

An optional BTEC Certificate can be awarded after successful completion of the course. Assessment for this award is by a written test together with performance tests during the "hands-on" sessions. The Lift Servicing course is of 2 weeks duration: two by one week modules, separated by 2 weeks.

For further information contact:- Peter Bright Programme Manager (Engineering)
NHS Training & Conference Centre, Eastwood Park, Falfield, Wotton Under Edge
Glos GL12 8DA Tel No: 0454 260207 Ext.2405 Fax No: 0454 260944

PROPBROOK LIMITED**STAND 7**

Propbrook, established in the late seventies, has become one of the leading suppliers and certainly the largest independent fabrication company in the U.K. lift industry. Situated in Birmingham we are ideally placed to supply the U.K. Easy access to the motorway network means fast and reliable deliveries throughout our customer base.

We offer a design service utilising the latest in CAD technology, therefore enabling us to prepare G.A. and manufacturing drawings from a faceplate to a complete lift installation. Equipment can be made to our own drawings and standards or from customers drawing and specification.

We manufacture and supply a range of standard lift components, for example our widely acclaimed High Performance D.C. Door Operator, track systems, bronze and aluminium sills, retractable clutch mechanisms with options on Zone locking and spring unlocking, landing locks and car gate interlocks.

Our landing entrances carry BSI type approval on the locks and can also be supplied to our own Fire Rated design which carries certification from the Loss Prevention Council.

As we are now agents for MONTANARI GEARS, we can supply drive units up to V/V A/C, overspeed governors, safety gears, rope terminations etc.

The latest addition to the group, Propbrook Refurb, offers specialist site services ranging from small builders works to complete car refurbishments.

PYE LONDON LTD**STAND 16**

We are general and mechanical engineers allied to the lift industry. Manufacturers of any size diameter cast iron Vee sheaves, divertor wheel shafts and dead eye assemblies, cast iron brake couplings and guide shoes in bronze and cast iron. Modifications to gear and motor units with fabrication of bed plates.

Offering a complete workshop to complement your needs.

QUALITY LIFT PRODUCTS LTD**STAND 2**

Quality Lift Products Limited was established in 1983 with the aim of providing quality products at affordable and competitive prices supported by excellent service. Our milestone to a "Total Quality Service" is demonstrated in our commitment to BS5750, for which we obtained registration in May 1992. As part of our continued quality theme we also introduced throughout 1992 the newly created management position of "Customer Support", providing on-site training, testing, and technical support to our valued customers.

During the last six years Q.L.P. has supplied in excess of 2,000 lift packages to the industry and we clearly expect to dramatically increase upon this over the next 6 years.

A new range of car frames and packages have been introduced for 1993 to compliment our current range.

Our commitment to quality is shared by our Associate principal supplier Electra Vitoria, who have just taken occupation of a 12,000 square metre purpose built high technology factory and administrative block, capable of producing over 1,200 lift packages per annum.

An exciting new product for the forthcoming year is the American designed and manufactured Top of Car Intrusion Device, which eliminates and deters vandalism and joyriding on top of lift cars.

So why not visit us on Stand 2 for a little hospitality and an informal discussion of your requirements?

RIGIDIZED METALS LIMITED (ENGLAND)**STAND 22**

Rigidized Metals is a British Manufacturer of textured ferrous and non-ferrous materials.

The 3-dimensional and random patterns produced by this process have both aesthetic and functional aspects. Primarily the pattern produces a surface which is difficult to damage, it resists impact and scratching and hence is ideal for use in situations where vandalism is rife or damage is caused through high density traffic. Hence the material is ideal for lift and door claddings, exterior cladding applications etc.

The bulk output is in stainless steel and aluminium but is also available in most other ferrous and non-ferrous materials. An extension to the basic concept is the company's production of coloured stainless steel.

Colour arises as a result of creating a light interference film which gives rise to a spectrum effect of colour. Paints, pigments and dyes are not used, thus the colour of bronze, blue, gold, red, green and black are totally colour-fast.

Rigidized Metals also offer MetalArt, a process for acid etching designs into stainless steel using a sophisticated photographic and screen printing technique. Design can be reproduced to client's criteria in sheets 8 x 4 feet maximum. Ideal applications are in lift and wall cladding.

SCOTT FABRICATION LTD**STAND 15**

SCOTT FABRICATION LTD was set up in 1984 and has seen steady growth ever since. We now employ over 20 staff and have 3 manufacturing sites in Central London and Kent, each specializing in different aspects of lift manufacture.

All staff are highly trained in their own disciplines, and are proud of the quality products supplied. Customer satisfaction is our highest priority, with delivery times and site schedules strictly adhered to.

All products can be inspected and tested at our works prior to despatch, from a simple A.P.B. control panel to a fully assembled lift car and sling. In fact, we encourage customers to visit all 3 sites to see exactly how good our machinery and facilities are.

Fabrication	Manufacture lift cars, doors, architraves, slings, structures, counterweights, guards, pit props and ladders, gear rafts, guide brackets, drop ceilings car operator seats, etc.
Control systems	Manufacture high reliability lift control panels, the unique sweep indicator, scrolling digital indicators, tapeheads, lighting packs, auto-dialler emergency telephone including voice feature, etc.
Electrical	Supply and fit shaft and motor room lighting, emergency lighting, new motor room supplies, alarm bells, etc. Also certified testing of portable power tools.
Re-lines	Lift car re-lines from pattern stainless to intricate hardwood veneers, re-wrapping of doors and architraves, all types of flooring, on site spraying, etc.
Other Services	Painting - shafts, pits, motor rooms, etc. Site repairs - welding, cutting, gate repairs etc.

SHORTS (LIFTS) LIMITED**STAND 8**

Established in 1945 and based in Bradford, West Yorkshire, Shorts (Lifts) Limited are suppliers to lift trade contractors of a comprehensive range of complete lift packages and associated components.

Regular assessment of UK and International markets enables Shorts to offer high quality products at competitive prices.

In-house engineering services support all product sales including design and installation if required. Standard and special applications receive the personalised service which is the hallmark of Shorts, developed over many years working with the lift trade.

Products: Service lifts, goods lifts, passenger lifts, hydraulic systems and power operated doors (including spares and components).

Agencies: BKG Service/passenger lifts with Bunse Aufzuege GmbH
ALGI hydraulic systems with Alfred Giehl KG
Automatic lift doors with Sematic (UK) Limited

THAMES VALLEY LIFT COMPANY LTD**STAND 25**

An awareness of the industry's requirements and a suitable response has always been the hallmark of Thames Valley Lift Company.

However, in today's lift industry the demands are ever increasing. Thames Valley Lift Company are aware that to await the question equates to a lack of forethought. Therefore, with suitable Research and Development, the Company can offer equipment before many customers have even considered its use.

This year's BLA Exhibition will illustrate just how Thames Valley Lift Company intend to introduce new products both in the mid and high-tech areas of their range.

The result will be the introduction today of products for the lift industry of tomorrow and must surely lead to a better future for all concerned.

Thames Valley Lift Company's philosophy is no secret and in practice is merely the placing of emphasis on three factors regardless of the application or scale of project.

These are: i) **Flexibility** ii) **Familiarity** iii) **Reliability**

The three inter-relate and when combined help produce a range that is: **flexible** enough to allow implementation with ease on either new lift or refurbishment projects.

Allows a level of user friendliness that will eventually lead to greater product **familiarity** at a technical level.

Implementation of a quality plan throughout production with BS5750 quality assurance accreditation, providing products of the highest quality and undoubted **reliability**.

THE SERVICE LIFT CO. LTD.**STAND 24**

A family company which was founded almost ten years ago in Kingston-upon-Thames. The company takes an enormous pride in the quality of its products and service.

We have a large customer base within the trade as well as an established reputation with Architects and Consultants alike.

**WE ARE THE U.K. AGENT FOR:
AND U.K. & EUROPEAN AGENT FOR:** **SKG SERVICE LIFTS
PEELLE DOORS**

THYSSEN LIFT COMPONENTS**STAND 19**

THYSSEN LIFT COMPONENTS supply a wide selection of component parts and packages for the UK lift industry.

In this field in particular it is essential to offer functional products of proven high quality. In development and production our products benefit from the expertise, efficiency and tried and tested experience of THYSSEN AUFZUEGE - one of the world's leading lift manufacturers.

Service and consultation are important factors in our relationships with our customers. Reliable information, computer aided, given by our experienced lift specialists, is a key feature of our service. These specialists help our customers make the right choice from a wide selection of products - from tried and tested gear units to functional doors and sensible safety technology.

The success of this concept speaks for itself. More and more lift companies are taking advantage of the THYSSEN LIFT COMPONENTS range.

THYSSEN LIFT COMPONENTS - FOR THE SAKE OF YOUR SUCCESS

TRUE BROTHERS MANUFACTURING LTD**STAND 34**

True Brothers Manufacturing Ltd was incorporated in 1961 and since 1976 has been offering a specialist service for the design, manufacture and supply of a wide range of Hydraulic Passenger and Goods Lift packages exclusively to the Lift trade. Traction Lift models are also available.

Due to our continued expansion we are pleased to announce the opening of our new factory and offices at Loughborough (Tel: 0509 265383) for the manufacture of Lift packages and associated equipment. Facilities are available for the manufacture in addition to Hydraulic packages, of Lift cars up to 5 tonne capacity, Slings, Balance weight frames, Steel Structure etc.

From January 1993 Puertas Fermator SA of Spain have appointed True Brothers their sole UK and Ireland agent for all Fermator Lift door products and spares.

We have on display examples of our 5 Person and 8 Person Lift cars, together with a sample of the wide range of Lift doors available from Fermator.

We are still a privately owned company and pride ourselves on the personalised service that we are able to offer to our customers. Our products are sold under the TRUBROS and TROUBADOUR trade names and technical literature is available.

Please find the time during your visit to the exhibition to come and talk to us on our stand - we look forward to meeting you.

ZIEHL-EBM (U.K.) LIMITED**STAND 21**

Ziehl-EBM (UK) Ltd will be displaying its latest comprehensive range of lift motors, controllers and ancillaries manufactured by Ziehl-Abegg of Germany, who are the world's largest manufacturer of AC lift motors.

The new range of single and 2 speed lift motors will be displayed. The latest range of variable voltage (AC)/(VVAC) and variable frequency control (VFC) will be featured. Advancements in electronic tach/encoder technology has enabled even greater performance and levelling accuracy.

The VVAC control system - the Zetadyn IDV - will be on display. A full working demonstration will be featured, illustrating the state of the art in lift motor control. These controllers feature exemplary performance, accurate floor levelling and conformance to all the latest EMC regulations, which is a particular advantage in buildings equipped with electronic data processing and recording equipment.

The Ziehl-Abegg submersible pump motor suitable for hydraulic lifts will also be shown. This compact, powerful and space saving package is quieter in operation than hydraulic systems which incorporate a conventional air cooled motor. Hydraulic ancillaries on display will include the unique Ziehl-Abegg rotating oil heater, which ensures accurate floor levelling and high performance even during very cold conditions within the lift plant room.

WESSEX MEDICAL EQUIPMENT CO LTD**STAND 1**

Wessex Medical have for over a quarter of a century specialised in the design and manufacture of a range of small traction and hydraulic lifts for the disabled, for use in the home. With a total of nine different models to choose from, the Company are able to provide a very compact lift to meet the requirements of most homes with the minimum amount of building work being necessary. Because they are built to B.S.5900 they have the added advantage that they do not require a shaft or enclosure at either level. More recently, the Company have introduced a range of small hydraulic platform lifts "The Liberty Lift Range", to provide access for the disabled and wheelchair user to public buildings, museums art galleries, restaurants, hotels and sports stadiums etc., some of their more recent installations being at Lords Cricket Ground; the Old Bailey; Granada T.V. Studios; Thomas Cooks. In addition to meeting the needs of the disabled, the Liberty Lift is proving equally popular whenever there is a need to move equipment between levels. One of the Company's more recent customers being the Prison Service where there was a requirement to move food trolleys.



Cable Lift Installations Ltd
"The people to talk to if you require a lift"

THE X FACTOR



Don't let your
elevator put
the

SQUEEZE
on you!

Manufactured by

TL Jones Ltd

MICROSCAN DIVISION
Head Office & Factory
52-60 Stewart Street
P.O. Box 1151
Christchurch
New Zealand
Phone (64-3) 379-9771
Fax (64-3) 366-7395

Introducing **MICROSCAN**

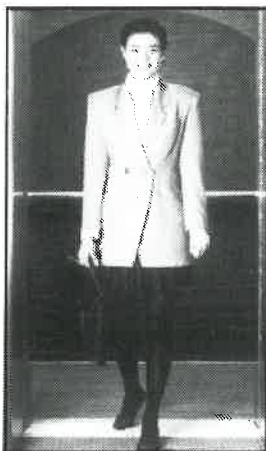
The leading edge in elevators

Here's the latest advance from T. L. Jones, the company that pioneered today's innovative elevator door technology.

The Microscan X scanning system utilises infra-red technology by projecting beams of light across the elevator door entrance and acting as a sensing screen that will not allow the doors to close if an obstruction is detected.

This innovative design features:

- 63 beam infra-red screen
- Exceptional performance
- Modular design for ease of installation and maintenance
- Compact construction
- Proven reliable electronic componentry
- Warning alarm system standard feature



For optimum passenger safety, economic operation, and improved performance -

Get the X Factor **MICROSCAN**

Distributed by



International Lift Equipment Limited

Units 1 & 2 Highams Park Industrial Estate
Larkshall Road, London E4 7HS
Telephone: 081 527 9669
Telex: 883096 ELEVAT G
Fax: 081 531 0936

Regional Offices

Northern (0457) 65623 • Southern (0202) 741061
Midlands (0533) 776599, Fax (0533) 770201

GOING UP!



The Group's expansion in the last two years is due to the extensive range of quality products offered, with full back-up from a highly skilled work force with a sound knowledge of the lift industry.

RECENT ACHIEVEMENTS

Recent achievements include 1,500 floating tapeheads sold within six months of release, Microscan Sensor sole agency, variable frequency drives and launch of new 630 kg package 'The International 8'.

ALL-ROUND SUPPORT

On top of all this, we provide engineering advice, drawing and design, on site back-up, plant hire, full product training and trade counter facilities.

VISIT STAND 28

So, see us on Stand 28 and we'll show you why we're on the up!

Our modern, high-tech factory in Leicester combined with CAD/CAM forms the nucleus for our extensive range of manufactured products.

COMPREHENSIVE RANGE

We supply a comprehensive range of certified components including G.A.L. and Selcom door equipment, micro processors, package lifts, Dewhurst components, guides, O/S governors, safety gears and much, much more.

NATION WIDE SERVICE

And from our warehouse in north London, a nation wide service is provided to all our customers.

BS 5750 ACCREDITED

The ILE Group is BS5750 Part 1 (ISO 9001) accredited for the design, manufacture and supply of components for the lift and allied industries.

COME AND FIND OUT ALL ABOUT OUR NEW 'INTERNATIONAL 8' COMPLETE LIFT PACKAGE

OUR STAND WILL DISPLAY ALL OF OUR NEW PRODUCTS PLUS MANY OTHERS AND LITERATURE ON ALL EQUIPMENT WILL BE AVAILABLE. ALSO OUR COMPREHENSIVE CATALOGUE PROVIDES COMPLETE INFORMATION ON ALL OUR PRODUCTS AND WILL BE AVAILABLE ON REQUEST.

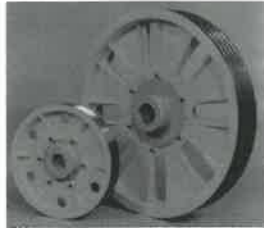
INTERNATIONAL LIFT EQUIPMENT LIMITED
UNITS 1 & 2, HIGHAMS PARK INDUSTRIAL ESTATE, LARKSHALL ROAD, LONDON E4 7HS
TELEPHONE: 081 527 9669. TELEX: 883096 ELEVANT G. FAX: 081 531 0936

ILE MANUFACTURING LIMITED
BLABY INDUSTRIAL PARK, WINCHESTER AVENUE, BLABY, LEICESTER LE8 3GZ
TELEPHONE: 0533 776599. FAX: 0533 770201



Manufacture of sheaves of any size diameter, bolt on hub type being our speciality, diverter wheels and assemblies

Complete refurbishments of gear boxes
 ● Re-grooving ● Modification to gears and motors
 ● Fabrication of bedplates, finish machined, manufacture of brake couplings, supply of guide shoes & assemblies in brass or cast iron
 ● Fabrication of brackets, toe guards & pit ladders.



PYE LONDON Ltd.

Hookers Road, Walthamstow, London E17 6DP
 Telephone: 081-531 3334 Facsimile: 081-531 3336

FSC STAINLESS & ALLOYS LIMITED

Ledra Works, Reservoir Place, West Midlands WS2 9SN
 Tel: (0922) 612545 Telex: 337546 Fax: (0922) 720646

Patterning of stainless Steel offers the following advantages; it provides many attractive possibilities in interior decor; it strengthens the material, allowing a lighter gauge of steel to be used for a given application; it obscures scratches and blemishes that would be very disfiguring on smooth steel; it makes graffiti-writing almost impossible; and, as the patterning is on one side only, the reverse may be fixed onto a substrate.

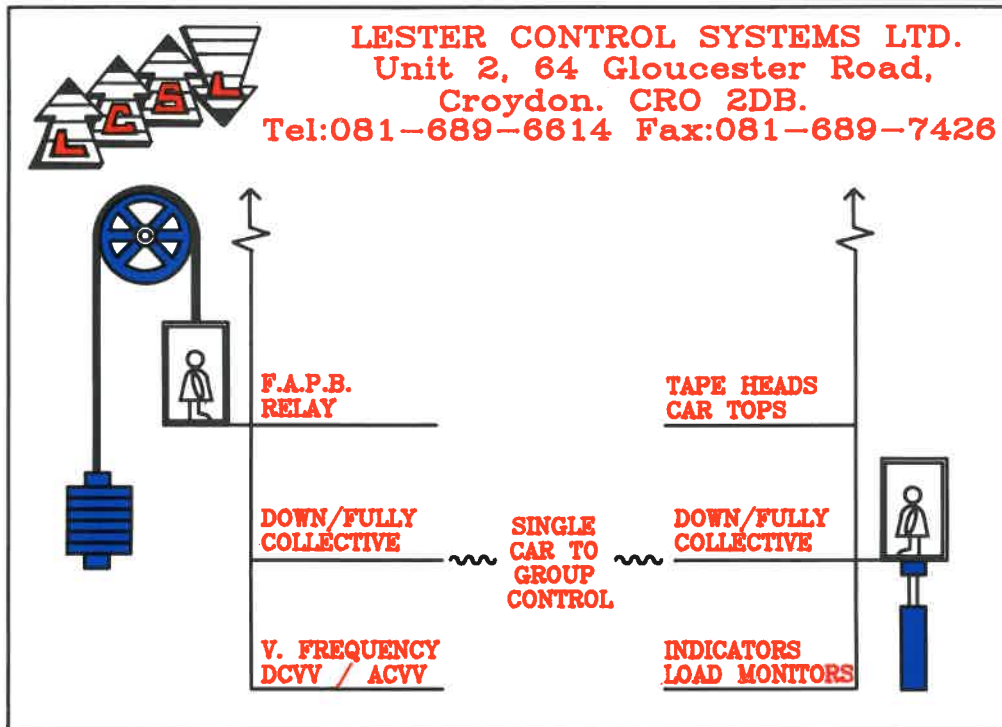
Sheets supplied are standard metric sizes as the table above, but non standard and imperial sizes and gauges can be produced. Patterned sheets are supplied in T.430, T.304 and T.316. Protective coating from .002 upwards can be applied in addition to our range we have available a further 78 patterns from Rigid-TEX Metals, USA.

For assistance with sales matters, quotations and technical queries, please contact the address above.

RANGE OF DIMENSIONS

Pattern No.	Designation	Thickness mm	Width mm	Length mm
21	Squares			
22	Rhomboids			
23	Diamonds			
25	Linen			
28	Chequer			
42	Leathergrain	0.5-2.0	max. 1500	500-6000
45	Bubbles			
47	Iceberg			
50	Worms			
52	Brickwork			
53	Letters			

STAND 5



LESTER CONTROL SYSTEMS LTD.
 Unit 2, 64 Gloucester Road,
 Croydon. CRO 2DB.
 Tel: 081-689-6614 Fax: 081-689-7426

RIGID-TEX METALS U.S.A.

Rigidized Metals Corporation originated design-strengthened, deep-textured metals over 50 years ago. These three dimensional patterns increase the rigidity of the sheets, offer decorative surfaces, and improve impact resistance.

Major Benefits include:

1. Resists scratches and dents.
2. Optically flat sheets – uniform reflectivity
3. Ability to use a lighter gauge.
4. Distinctive and decorative patterns.

These benefits, along with the variety of patterns, metals, and finishes available, have made Rigid-TEX Metals a popular choice for Lift door, interiors, entrances, also for balustrades on moving walkways.

FSC Stainless & Alloys Limited are the sole UK agents for Rigid-TEX Metals.

STAND 5

TOTAL QUALITY

ELEVATOR TRAVELLING CABLES

DRAKA CALFLEX DESIGNS AND MANUFACTURES ONE OF THE MOST COMPREHENSIVE RANGES OF ELEVATOR TRAVELLING CABLES IN EUROPE. OUR COMMITMENT IS TO TOTAL QUALITY AND TOTAL CUSTOMER SATISFACTION.

- EXCELLENT FLEXIBILITY & LOOP DIMENSIONS
- TORSIONALLY BALANCED TO HANG TRUE
- FULL RANGE OF STANDARD & CUSTOM DESIGNS
- MANUFACTURED TO BS6977, CENELEC & CUSTOMER'S OWN STANDARDS

Draka Calflex

PARK RD CALVERTON NOTTINGHAM NG14 6LL
TEL: 0602 652574 FAX: 0602 654303



ISO 9001



TREFILEUROPE

Ropes Ltd.



DRAKO

Drahtseilerei Gustav Kocks GmbH

TrefilEUROPE Ropes Limited is responsible for the sale of wire ropes throughout the UK, they are backed by a stockholding at their Wire Ropes Service Centre in Crewe, Cheshire. **TrefilEUROPE Ropes Limited** is a 100% subsidiary of **DRAKO Drahtseilerei Gustav Kocks GmbH** of Mulheim an der Ruhr in Germany which, in turn, is part of USINER/SACILOR - Europe's leading steel manufacturer and second largest world wide!

DRAKO has been supplying **elevator ropes** on a world wide basis for over 60 years. The main customers include **OTIS, SCHINDLER, KONE and THYSSEN.**

DRAKO manufactures the 6 and 8 strand constructions Seale, Warrington and Filler as well as the highly sophisticated 9 strand IWRC special elevator rope **DRAKO 300T.**

DRAKO elevator ropes are, for example, employed at the following high-rise installations:

WORLD TRADE CENTRE (North and South) in New York, the SEARS TOWER in Chicago, the EXHIBITION TOWER in Frankfurt/Main, the EIFFEL TOWER in Paris, the EXCHANGE SQUARE in Hong Kong, the HEA SUNG BUILDING in Seoul and the TELEVISION TOWER in Beijing.

DRAKO elevator ropes are made of steel wires of a high purity and a special surface quality in big production lengths. Due to very sophisticated and up-to-date quality control procedures a constant high quality level is guaranteed.

According to customer requirement the material can be delivered either in one length or in cut-to-length execution, combined with pressed thimble/eyebolt. The **DRAKO** engineers will be pleased to give more technical information upon request.

For a copy of our special elevator rope catalogue "INFORM 6" please contact:

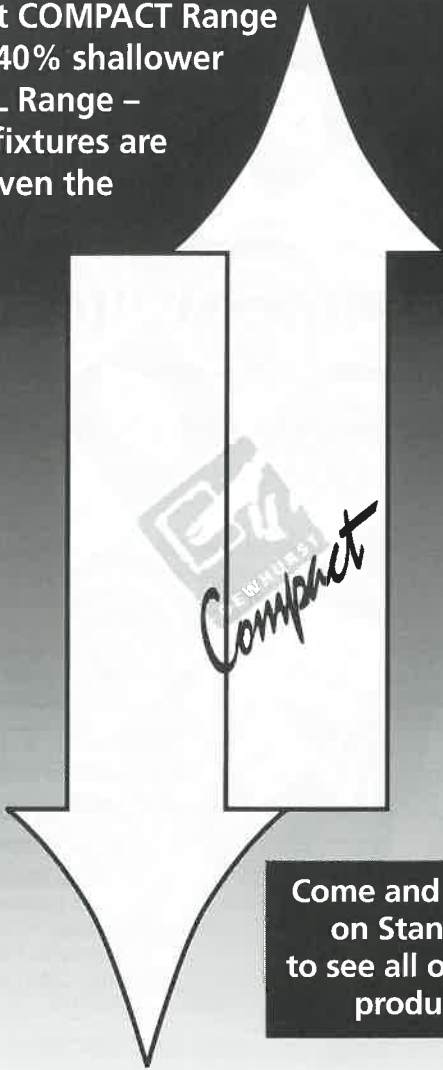
Alex Morrison or Maurice Baldwin
TrefilEUROPE Ropes Limited
Lancaster Fields,
Crewe Gates Farm Industrial Estate,
CREWE, CHESHIRE, CW1 1FF
GREAT BRITAIN

TEL 0270 587728
FAX 0270 587913

109210

There's Plenty of Space on the Dewhurst Stand

The new Dewhurst COMPACT Range of pushbuttons is 40% shallower than our ORIGINAL Range – Dewhurst quality fixtures are now suitable for even the smallest lifts.



Come and join us
on Stand 31
to see all our new
products



Inverness Road, Hounslow, TW3 3LT. Telephone: 081-570 7791



ELECTRICAL DISTRIBUTORS Ltd

297 HALE END ROAD
WOODFORD GREEN
ESSEX, IG8 9LU.

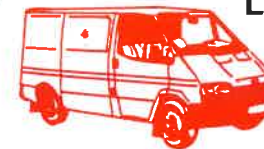
TEL:081 531 7231 (6 Lines)
FAX:081 527 2202

**SUPPLIERS OF LIFT
INSTALLATION
EQUIPMENT:**

STAND 35



LIFT TRAILING CABLE
CAR TOP CONTROLS
HALFWAY BOXES
HANDWINDING UNITS
ALARM SUPPLIES
EMERGENCY LIGHT SUPPLIES
SHAFT LIGHTING
DEWHURST EQUIPMENT
TRUNKING / CONDUIT
RUBBER MATTING
LIFT NOTICES



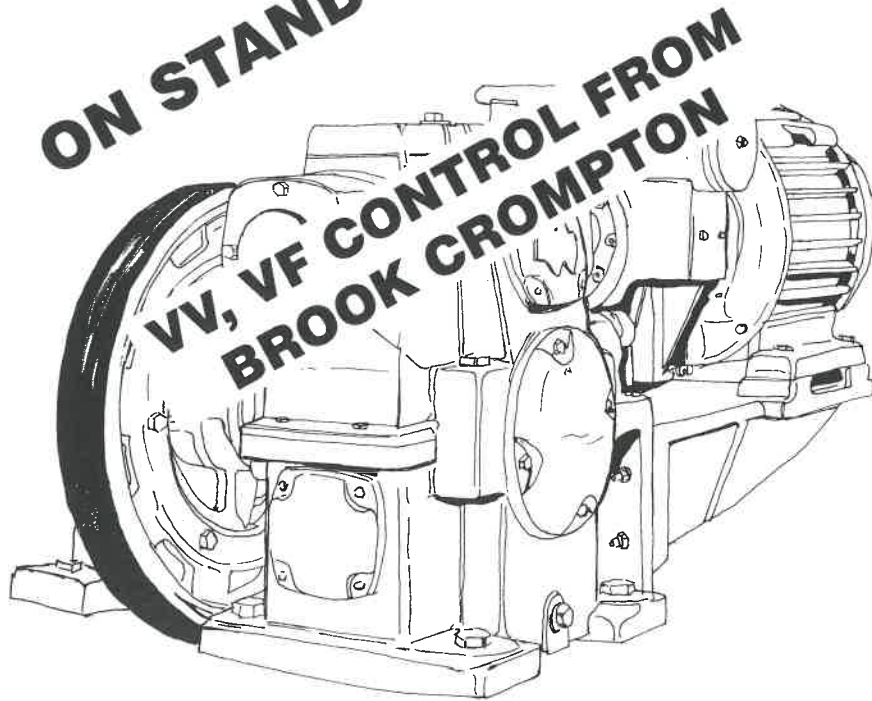
NEXT DAY NATIONWIDE AND EXPRESS DELIVERIES

Power Transmission Engineers

Highfield Gears Ltd



ON STAND 17



THE ENHANCED HILIFT

USER FRIENDLY TECHNOLOGY

NILE STREET, HUDDERSFIELD, HD1 3LP. TEL: (0484) 424466 FAX: (0484) 512433

COME AND
SEE US ON
STAND No.



Liftmaterial (GB) Ltd

29-32 Broomhills Industrial Estate, Braintree, Essex CM7 7RW
Tel: 0376 550666 Fax: 0376 341219

GF Lift Hydraulics

SPECIALISTS IN

Supply and Installation of Hydraulic Equipment
Refurbishing and Modernising of Hydraulic Lifts including
Controllers and Interface Cabinets
Repair and Installation of Ancilliary Equipment - Cylinders -
Valves - Coolers - Rupture Valves - Hydraulic Oil
Consultancy work and site surveys undertaken

In other words

A COMPLETE HYDRAULIC LIFT SERVICE

79 Station Road, Quainton / Bucks. HP22 4BX
Tel. 029675 411 - Fax 029675 742

14 Kings Road, Biggin Hill / Kent TN16 3XU
Tel. 0959 575169 - Fax 0959 575574

DRUCEGROVE LTD.

Suppliers of

PROGRAMMABLE(SCROLLING) DOT-MATRIX INDICATORS

ELECTRONIC SAFETY EDGES & SIGHT GUARDS

MULTI-WAY ALARM ANNUNCIATOR UNITS

MULTI-WAY INTERCOM UNITS

DIGITISED SPEECH UNITS

HALL-LANTERN ARROWS

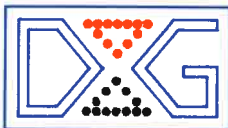
GONGS

PUSH PLATES

INDICATOR FACEPLATES

CAR OPERATING PANELS

and ancillary items



Unit 12, Abbey Mead Industrial Park
Brooker Road
WALTHAM ABBEY, Essex. EN9 1HU
Tel: 0992-650486 Fax: 0992-652226

A thrilling new suspense story



Some like it flat, some like it round – more and more lift manufacturers are getting hung up on Dätwyler's Dynofil lift suspension cable. The flat one's so incredibly flexible, versatile and downright hardworking, while the round one, so experienced and reliable, has helped young "flatty" make it all the way to the top – of the highest lift shafts in the world. Old hands in the trade say there's a great future ahead for our "flatty" and anyone who's seen Dynofil agrees.

Dätwyler



Dätwyler Cables (USA) Inc.
40 West 57th Street-STE 918
New York, N.Y. 10019 USA
Telephone 212-956-2820
Fax 212-956-3248

Dätwyler (U.K.) Ltd.
Such Close, Works Road
Letchworth, Herts SG6 1JF
Telephone 0462/48 28 88
Fax 0462/48 10 38

Dätwyler AG
Cables and Systems
Switzerland, CH-6460 Altdorf
Telephone 044/4 11 22
Fax 044/4 18 70

dynofil Visit us at Stand No. 6

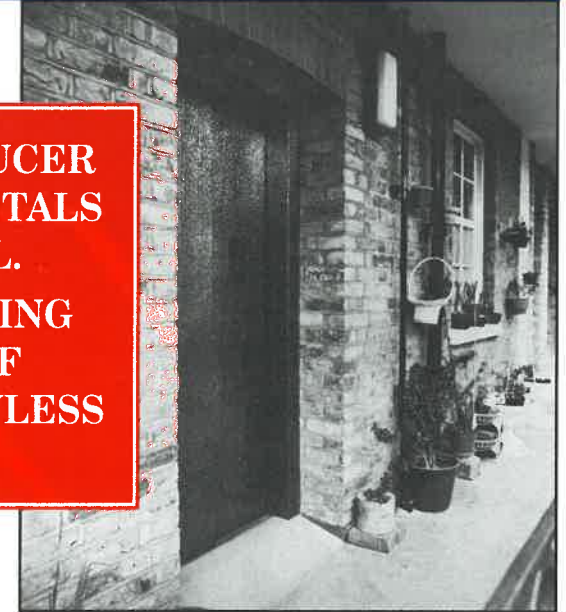


EXPERIENCE
OPTIMUM
PERFORMANCE

Thyssen Lift Components
3/4 Lawrence Way
Stanhope Road
Camberley, Surrey GU15 3DL
Telephone: 0276 677117

STAND 22 - RIGIDIZED METALS LTD.
of ENFIELD, ENGLAND.

UK's SOLE PRODUCER
OF RIGIDIZED METALS
SHEET & COIL.
EUROPE'S LEADING
PRODUCER OF
COLOURED STAINLESS
STEEL.



Gold 10 WGHhighlighted Lift.

Specialist producers and suppliers
to the Worldwide Lift Industry of
Rigidized and one sided patterned
steels for:-

- * Anti vandal claddings
- * High class decorative claddings
- * Low cost goods lift claddings
- * Flooring
- * Ceilings
- * Architectural finishes

Full production facilities for:-

- * Super mirror polishing
- * Satin polishing
- * Electropolishing
- * Customised acid etching and bead
blasting
- * Decoiling

WE ARE BS 5750
APPROVED

**RIGIDIZED
METALS**

Rigidized Metals Ltd.
Aden Road, Ponders End,
Enfield, Middx. EN3 7SU.
Tel: 081 804 0633
Fax: 081 804 7275
Telex: 28783



Thames Valley
The name is synonymous
with quality.

And now it is officially endorsed with
the *BS 5750 Quality Standard* award.

TOTAL CONTROL TECHNOLOGY

THAMES VALLEY LIFT COMPANY

Unit 15, Manor Farm Industrial Estate, Flint, Clwyd CH6 5UY, U.K. Tel: (0352) 762521. Fax: (0352) 762919.

THAMES VALLEY COMMUNICATIONS DIVISION

Unit 6, Castle Park Industrial Estate, Flint, Clwyd CH6 5XA, U.K. Tel: (0352) 735291. Fax: (0352) 763867.

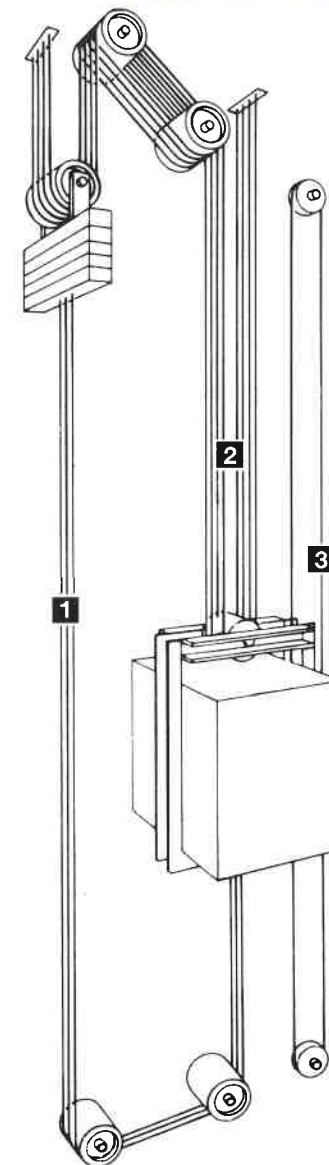


BRIDON ELEVATOR ROPES

Bridon Ropes Limited offers a complete range of wire ropes and associated products on a world wide basis to meet your needs.

- Elevator Ropes
- Rope Terminations
- Brilube® 40 Service Dressing
- Associated Lifting Equipment

- 1 Compensating Ropes
- 2 Suspension Ropes
- 3 Governor Rope



*Quality is our strength -
Strength is our business*

See us on Stand 20

Bridon Ropes Limited, Carr Hill, Doncaster, South Yorkshire, DN4 8DG, England.
Telephone: (0302) 344010 Fax: (0302) 382263 Telex: 547981

SUPPLIERS TO THE INDUSTRY

LIFT PACKAGES - GOODS & PASSENGER
HYDRAULIC UP TO 24 PERSONS
TRACTION UP TO 16 PERSONS

COMPONENTS

WINDING UNITS
 HYDRAULIC UNITS
 RAMS
 GUIDE RAILS
 LIFT CARS
 SLING PACKAGES
 CONTROL SYSTEMS
 DOORS

SPARES

FIELD SERVICES

TRAINING
 TECHNICAL SUPPORT
 TESTING



Quality Lifts Products Limited,
 Unit 6, Whaddon Business Park, Whaddon,
 Nr. Salisbury, Wiltshire, SP5 3HF
 Telephone No. 0722 711122
 Fax No. 0722 711041

WHY NOT JOIN US FOR
 A DRINK ON
 STAND 2?

5 UNIQUE AUTOMATIC DOOR SAFETY CONTROLS FROM FORMULA SYSTEMS GIVE GREATER FLEXIBILITY OF CHOICE IN ALL APPLICATIONS

The latest and best in innovative technology ensures even greater control over safety, economy and efficiency. The smallest robust invisible infra-red safety systems anywhere. Compatible with almost every type of automatic door and so simple to install.

THE QUEEN'S AWARD FOR TECHNOLOGICAL ACHIEVEMENT

presented to Formula Systems for their Mansafe and Door Activator systems adds testimony to the reliability, quality and capability of our products.



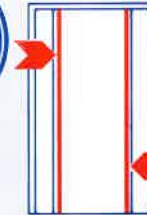
For further details please contact your nearest stockist or write to
FORMULA SYSTEMS LTD, Witan Park, Avenue 2, Station Lane Industrial Estate, Witney, Oxford, UK. OX8 6FH. Tel: Witney (0993) 779333 International: 44 993 779333 Fax: Witney (0993) 779344

STOCKISTS
CANADA Delco Industries Ltd., 12202 Old Yale Road, Surrey, B.C. V3V 3X5. Tel: (604) 580-2443.
FRANCE Siminar S.A., 31-43 Quai Des Gresilliers, 92230 Gennevilliers. Tel: (1) 40.86.40.86.
ITALY S.E.M.A.G. - S.p.A., Via San Carlo 13, 20010 Bareggio, Milano. Tel: (02) 90.360.112.
SPAIN Mecanismos y Accesorios S.A., Pol. Ind. Navisa, Calle E, No. 2-20, 41006 Sevilla. Tel: 34-5-4630562.
U.S.A. Adams Elevator Equipment Co., 5640 Howard Street, Skokie, IL 60077-2684. Tel: 1-708-675-0753. Toll-Free Tel: 1-800-323-0796.
GERMANY LM Liftmaterial GmbH & Co Kg, Postfach 1162, D-8011, Pliening-Landsham. Tel: (089) 909979-0.
U.K. Drucegrove Ltd., Unit 12, Abbey Mead Industrial Park, Brooker Road, Waltham Abbey, Essex EN9 1HU. Tel: 0992-650486.



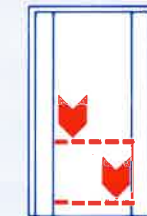
MANSAFE TYPE FLR Proximity Infra-Red Safety Edge plus Dual Photo-Eye

Continuous vertical protection for 125mm in front of car and landing doors plus additional photo-eyes. Essential for fast moving traffic with extra protection for physically handicapped, families, and senior citizens.



DOOR ACTIVATOR TYPE FDE Proximity Infra-Red Safety Edge

Continuous vertical protection for 125mm in front of car and landing doors. Essential in office accommodation for fast moving traffic. Minimum door reversals.



DUALEYE TYPE FPE Dual Photo-Eye

An economical alternative that meets the minimum protection requirements for passengers.



SAFESCREEN 47 TYPE FCU 247 47 Beam Infra-Red Safety Screen

Light curtain of zig-zag photo-eyes give extra protection when doors are nearly closed. Essential for shops, hospitals, offices, sheltered accommodation where trolleys, beds, prams and frames are used and the doors are kept fully open.



SAFESCREEN 47 PLUS 47 Beam Infra-Red Safety Screen plus 3 Photo-Eyes

Features as the Safescreen 47. Plus 3 photo-eyes able to monitor traffic or act as a separate protection system. Essential for shops, hospitals, offices, stores and sheltered accommodation where extra protection of 2 systems is needed.



Formula Systems and Mansafe are registered trade marks. Door Activator, Dualeye, Safescreen 47 and Safescreen 47 Plus are trade marks of Formula Systems.

SEE US ON STAND 14

FOREMOST IN LIFT MOTOR TECHNOLOGY

30,000 sq ft of storage space within a total operating complex of around 35,000 sq ft. As the accepted market leaders in the supply of Motors we carry at any given time large stocks of lift motors, controllers and spares to support our clients needs... and we guarantee same-day despatch for orders placed before 11.30 am for delivery anywhere in the UK the following day. It will pay you to have a word with one of our specialist executives... for the right answer to all lift motor queries.

**IMMEDIATE
DELIVERY**

**ZIEHL-EBM's
STOCKING POLICY**

enables our customers to choose from a substantial range of LIFT MOTORS with the advantage of taking immediate delivery.

Come along and meet us at the show we will be pleased to discuss any specific application without any obligation whatsoever.



ZIEHL

say 'ZEAL'

EBM

(UK)LTD



BS 5750
ZIEHL-EBM LTD
is a registered company
No. 347



Member HEVAC Association
Member Fan Manufacturers
Association



17-19 RICHMOND ROAD, DUKES PARK INDUSTRIAL ESTATE, CHELMSFORD, ESSEX CM2 6TL
Tel: (0245) 468555 Telex: 995213 Fax: (0245) 466336

Jackson
Lift Group

E
L
E
V
A
T
I
N
G

* Largest Independent Lift Maintenance Company in the South. *

* All makes maintained and refurbished to the highest standard. *

* High quality passenger and goods lift installations. *

Contact : John Clarke

JACKSON LIFT GROUP

UNIT 4/18 ROPERY BUSINESS PARK, 48 ANCHOR & HOPE LANE,

CHARLTON, LONDON,

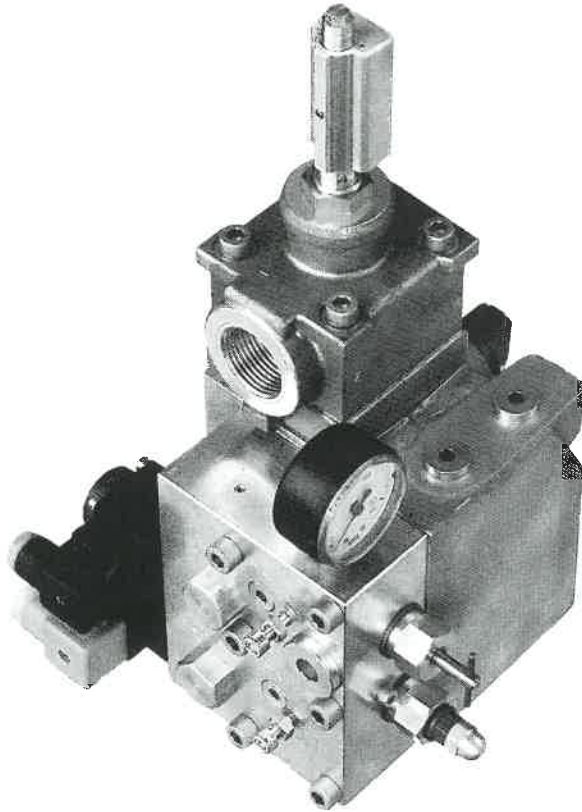
SE7 7RX.

TELEPHONE : 081 - 293 - 4176 FACSIMILE : 081 - 305 - 0274

Q
U
A
L
I
T
Y

START TO STOP

LRV-A - THE NEW GENERATION



Welcome to Stand 10

BERINGER HYDRAULICS

79 Station Road
Quainton / Bucks. HP22 4BX

Tel.029675 611/2
Fax 029675 741

Beringer

.... SWITZERLAND

BRITISH LIFT ASSOCIATION MEMBERS

3 Map Lift Equipment Ltd, Unit 26 Northfield Ind. Estate, Beresford Avenue, Wembley, Middlesex, HA0 1NW. Tel: 081-900 1822, Fax: 081-903 2971

A & A Electrical Distributors Ltd, 297 Hale End Road, Woodford Green, London, IG8 9LU. Tel: 081-531 7231, Fax: 081-527 2202

A.F.D. Gears Ltd, 61 Tile Kiln Lane, Bexley, Kent, DA5 2JE. Tel: 0322 523152, Fax: 0322 528192

Abbey-Langham Lifts Ltd, 28 Sidney Road, London, N22 4LS. Tel: 081-881 3337, Fax: 081-889 3381

Access Industries (UK) Ltd, 72 Jay Avenue, Teeside Ind. Estate, Thornaby, Stockton-on-Tees, Cleveland, TS17 9LZ. Tel: 0642 750707, Fax: 0642 750709

Ace Elevators Ltd, Kensington Street Works, Kensington Street, Keighley, Yorks, BD21 1PW. Tel: 0535 602239, Fax: 0535 661268

Adair Bros Ltd, 1-7 Skegoneill Street, Belfast, BT15 3JL, Ireland. Tel: 0232 370947, Fax: 0232 370947

Advance Lifts (Northern) Ltd, Seven Stars Road, Wallgate, Wigan, WN3 5AT. Tel: 0942 826737, Fax: 0942 820315

Alimak Ltd, Northampton Road, Rushden, Northants, NN10 9BW. Tel: 0933 410400, Fax: 0933 410600

Apollo Lifts Ltd, Apollo House, Back Lane, Chadwell Heath, Essex, RM6 4BP. Tel: 081-590 6721, Fax: 081-590 5520

Artisan Control Equipment Ltd, The Old Fire Station, The Cross, Mold Road, Buckley, Clwyd, CH7 2JB. Tel: 0244 545680, Fax: 0244 549482

Associated Lift Services Ltd, Chaffinch Building, 76 Beckenham Road, Beckenham, BR3 4RH. Tel: 081-663 3430, Fax: 081-663 3653

Avesta Stainless Ltd, The Avenue, Rubery, Birmingham, B45 9AG. Tel: 021-453 6111, Fax: 021-453 8435

Beringer Hydraulics, 79 Station Road, Quainton, Bucks, HP22 4BX. Tel: 0296 75611, Fax: 0296 75741

H. Breakell & Co (Blackburn) Ltd, Whitebirk Industrial Estate, Philips Road, Blackburn, BB1 5RL. Tel: 0254 580887, Fax: 0254 673440

Bridon Ropes Ltd, Carr Hill, Doncaster, S Yorkshire, DN4 8DG. Tel: 0302 344010, Fax: 0302 382263

Bright Home Products Ltd, 7 Lancaster Road, Carnaby Industrial Estate, Bridlington, Yorks, YO15 3QY. Tel: 0262 606376, Fax: 0262 674117

Budget Lift Services Ltd, Unit 5, Bermondsey Trading Estate, Rotherhithe New Road, London, SE16 3LL. Tel: 071-928 0694, Fax: 071-231 4487

Cable Lift Installations Ltd, 50 Brooksby Walk, Hackney, London, E9 6DA. Tel: 081-986 9416, Fax: 081-986 0229

Cardiff Lift Company, Unit 5, Hurman Street Docks, Cardiff, CF1 6JD, Wales. Tel: 0222 482822, Fax: 0222 494713

Chiltern Lift Co. Ltd, 8 Furlong Road, Bourne End, Bucks, SL8 5DG. Tel: 06285 29247, Fax: 0628 810821

Classic Lifts Ltd, Jubilee House, Altcar Road, Formby, Liverpool, B7 8DL. Tel: 07048 33255/33880, Fax: 07048 33880

Coastal Lifts Ltd, Drewitt House, 865 Ringwood Road, Bournemouth, Dorset, BH11 8LL. Tel: 0202 577995/578787, Fax: 0202 578788

Contracts Direct Ltd, P.O. Box 1, Rexmore Way, Liverpool, L15 0HZ. Tel: 051-734 4396, Fax: 051-734 4741

Cotswold Lift Services, Unit G, New Yatt Business Ctr, New Yatt, Witney, Oxford, OX8 5XB. Tel: 0993 868516/868956, Fax: 0993 868649

D & A Lifts Ltd, 104-106 Dog Kennel Hill, London, SE22 8BE. Tel: 071-274 8146, Fax: 071-773 9411

Datwyler (UK) Ltd, Such Close, Works Road, Letchworth, Herts, SG6 1JF. Tel: 0462 482888, Fax: 0462 481038

Deve Lifts (UK) Ltd, 3 Lancaster Court, Coronation Road, High Wycombe, Bucks, HP12 3TD. Tel: 0494 464420, Fax: 0494 471449

Dewcroft Engineering Ltd, 161 Tarring Road, Worthing, Sussex, BN11 4HH. Tel: 0903 231292, Fax: 0903 231629

Dewhurst Plc, Melbourne Works, Inverness Road, Hounslow, Middx, TW3 3LT. Tel: 081-570 7791, Fax: 081-572 5986

Dowding & Mills (Southern) Ltd, 24-26 White Post Lane, Hackney, London, E9 5EP. Tel: 081-985 8351, Fax: 081-985 9615

Draka Calflex Ltd, Park Road, Calverton, Nottingham, NG14 6LL. Tel: 0602 652574, Fax: 0602 654303

Drucegrove Ltd, Unit 12, Abbey Mead Ind. Park, Brooker Road, Waltham Abbey, Essex, EN9 1HU. Tel: 0992 650486, Fax: 0992 652226

Ebor Lifts Ltd, 59 Blossom Street, York, Yorkshire, YO2 2AZ. Tel: 0904 658774/637526, Fax: 0904 613217

Empire Lift, Haycroft Avenue, Grimsby, S. Humberside, DN31 2PE. Tel: 0472 241632, Fax: 0472 241632

Essex Wireworks Co. Ltd, P.O. Box 1, Hockley, Essex, S55 5LD. Tel: 0702 205022, Fax: 0702 207678

Eurogears Ltd, 6 Winchester Avenue, Walderslade, Chatham, Kent, ME5 9AS. Tel: 0634 864268, Fax: 0634 864268

Express Transformers & Controls Ltd, Picow Farm Road, Runcorn, Cheshire, WA7 4UJ. Tel: 0928 574491, Fax: 0928 580693

F.S.C. Stainless & Alloys Ltd, Ledra Works, Reservoir Place, Walsall, W. Midlands, WS2 9SN. Tel: 0922 612545, Fax: 0922 720646

Formula Systems Ltd, Witan Park, Avenue 2, Station Lane Ind. Estate, Witney, Oxford, OX8 6FH. Tel: 0993 779333, Fax: 0993 779344

G.F. Lift Hydraulics, 79 Station Road, Quainton, Bucks, HP22 4BX. Tel: 0296 75411, Fax: 0296 75742

G.S.L. Lift Services Ltd, 57 Wellington Street, Aberdeen, AB2 1BX. Tel: 0224 212110, Fax: 0224 575283
Also at: 105A Carlisle Road, Ferniegair, Hamilton, ML3 7TU. Tel: 0698 282761, Fax: 0698 457004

Guideline Installations Ltd, Unit C, White Oak Tech. Park, London Road, Swanley, Kent, BR8 7AN. Tel: 0322 665665, Fax: 0322 661036

Hart Lifts, Unit 2, Huntershill Way, Bishopbriggs, Glasgow, G64 1XP. Tel: 041-7729797

Highfield Gears Ltd, Nile Street, off St Thomas Road, Huddersfield, W. Yorks, HD1 3LP. Tel: 0484 424466, Fax: 0484 512433

Horizon Lifts Ltd, Langley House, Langley Mill, Nottingham, NG16 4AN. Tel: 0773 530777, Fax: 0773 718236

Hydrax Ltd, Wylds Road, Bridgwater, Somerset, TA6 4BH. Tel: 0278 450075, Fax: 0278 444177

Independent Lift Services Ltd, Unit 3J, Barlow Way, Fairview Ind. Park, Manor Way, Rainham, Essex, RM13 8BT. Tel: 0708 526761, Fax: 0708 558825

Independent Lifts Ltd, Devonshire House, Devonshire Terrace, Holmewood, Chesterfield, S42 5RF. Tel: 0246 850785, Fax: 0246 854177

Industrial Lift Services Ltd, Unit 7, Summit Centre, Summit Road, Cranbourne Ind. Estate, Potters Bar, Herts, EN6 3QW. Tel: 0707 49609/662174, Fax: 0707 660553

International Lift Equipment, Units 1-2, Highams Park Ind. Estate, Larkshall Road, Chingford, London, E4 7HS. Tel: 081-527 9669, Fax: 081-531 0936

Jackson Lift Group Ltd, Unit 4/18, Ropery Business Park, 48 Anchor & Hope Lane, Charlton, London, SE7 7RX. Tel: 081-293 4176, Fax: 081-305 0274

W. Jennings & Associates, Hexagon House, 64 Walton Road, East Molesey, Surrey, KT8 0DL. Tel: 081-979 9944, Fax: 081-941 1002

Key Elevators Ltd, Barlow Way, Fairview Ind. Park, Manor Way, Rainham, Essex, RM13 8BT. Tel: 04027 50434, Fax: 04027 25727

Kingston Lift Company, 51 Alpine Avenue, Tolworth, Surrey, KT5 9RL. Tel: 081-330 0663, Fax: 081-330 0663

L TEK Ltd, Unit 6, Acorn Works, Empress Road, Southampton, Hampshire, SO2 0JY. Tel: 0703 632439, Fax: 0703 230862

L.T.R. (Lifts) Ltd, 31 Newcastle Street, Stone, Staffs, ST15 8JX. Tel: 0785 818616, Fax: 0785 812793

Lester Control Systems Ltd, Unit 2, 64 Gloucester Road, Croydon, Surrey, CRO 2DB. Tel: 081-689 6614, Fax: 081-689 7426

Lester Lift Services Ltd, 53b Winterbourne Road, Thornton Heath, Surrey, CR7 7QX. Tel: 081-684 6611, Fax: 081-684 5381

Lift Components Ltd, Unit C12, Poplar Business Park, 10 Preston Road, London, E14 9RL. Tel: 071-515 5504, Fax: 071-538 2815

Lifteknic Ltd, Unit 22, Engineer Park, Sandycroft, Deeside, Clwyd, North Wales, CH5 2QD. Tel: 0244 537720, Fax: 0244 537660

Lift Material (GB) Ltd, 29-32 Broomhills Ind. Estate, Rayne Road, Braintree, Essex, CM7 7RW. Tel: 0376 550666, Fax: 0376 341219

Lift Services, 69 Baranscraig Avenue, Brighton, BN1 8RF. Tel: 0273 566066, Fax: 0273 566066

Lift Services (South Wales) Ltd, Clive Road Hall, Clive Road, Canton, Cardiff, S. Glamorgan, CF5 1HH. Tel: 0222 231602/344886, Fax: 0222 221052

Lift-Tech Engineering, Unit 3a, Grimeford Industrial Estate, Grimeford Lane, Anderton, Nr. Chorley, Lancashire. PR6 9HL. Tel: 0257 475252 (2 lines), Fax: 0257 474919

Liftwise Ltd, Ebblake Ind. Estate, 8 Bessemer Close, Verwood, Dorset, BH31 6AZ. Tel: 0202 824522, Fax: 0202 826657

Lion Lift Controls Ltd, Littleton Mills, Winford, Bristol, BS18 8HJ. Tel: 0275 332515, Fax: 0275 333085

Lloyds British Lifts Ltd, Atlas House, Belwell Lane, Sutton Coldfield, W. Midlands, B74 4AB. Tel: 021-308 7101, Fax: 021-308 7287

Lutz Southern Elevators Ltd, Southern House, Anthony's Way, Frindsbury, Rochester, Kent, ME2 4DN. Tel: 0634 290444, Fax: 0634 710046

Major Lift Services Ltd, Unit 1, Whilems Works Ind. Estate, Forest Road, Hainault, Essex, IG6 3HJ. Tel: 081-500 0925, Fax: 081-500 4145

I Maszlik Lift Engineering, 38 Bromley Common, Bromley, Kent, BR2 9PD. Tel: 081-464 5321, Fax: 081-464 0961

Mavercourt Ltd, Unit A, Perran Works, Merrow Street Ind. Estate, Merrow, Guildford, Surrey, GU4 7BN. Tel: 0483 506133, Fax: 0483 302370

Metro Lifts Ltd, 88 Lancaster Road, Enfield, Middlesex, EN2 0BX. Tel: 081-366 8838, Fax: 081-363 4505

Monarch Lifts Ltd, Unit 3, 45 Tudor Road, Hackney, London, E9 7SN. Tel: 081-986 6116, Fax: 081-986 6954

Morris Vermaport Ltd, 3 Attenborough Lane, Chilwell, Beeston, Nottingham, NG9 5JP. Tel: 0602 228223, Fax: 0602 227015

Nesbit Evans Healthcare Ltd, 5 Regents Court, South Way, Walworth Ind. Estate, Andover, Hampshire, SP10 5NX. Tel: 0264 334434, Fax: 0264 334330

NHS Training Centre, Eastwood Park, Falfield, Wotton-under-Edge, Glos, GL12 8DA. Tel: 0454 260207, Fax: 0454 260944

BRITISH LIFT ASSOCIATION MEMBERS

North West Lifts, 102-106 Back Cunliffe Road,
Blackpool, FY1 6SD. Tel: 0253 798613,
Fax: 0253 798615

Orion Lifts Ltd, Alpine House, 28 Church Road,
Rainford, St. Helens, Merseyside, WA11 8HE.
Tel: 0744 885102, Fax: 0774 882235

Park Elevators Ltd, 9-17 Park Royal Road,
London, NW10 7LQ. Tel: 081-965 9929,
Fax: 081-961 1016

Phoenix Lift Services, 136 High Street,
Ramsgate, Kent, CT11 9TY. Tel: 0843 580004,
Fax: 0843 594894

Propbrook Ltd, 389 Lichfield Road, Aston,
Birmingham, W. Midlands, B6 7SS.
Tel: 021-327 7909, Fax: 021-327 7423

Pye London Ltd, Hookers Road, Walthamstow,
London, E17 6DP. Tel: 081-531 3334,
Fax: 081-531 3336

Quality Lift Products Ltd, Unit 6, Whaddon
Business Park, Whaddon, Nr. Salisbury,
Wiltshire, SP5 3HF. Tel: 0722 711122,
Fax: 0722 711041

Rigid-Tex Metals Corporation, 658 Ohio Street,
Buffalo, New York, 14203, U.S.A.
Tel: 0101-716-849 4706, Fax: 0101-716-849 0401

Rigidized Metals Ltd, Aden Road, Ponders End,
Enfield, Middlesex, EN3 7SU.
Tel: 081-804 0633, Fax: 081-804 7275

Roger Jones & Sons Ltd, Unit 1-5, Poplar Road
Ind. Estate, Van Road, Caerphilly, Wales,
CF8 1LF. Tel: 0222 860212, Fax: 0222 887999

Rubax Lifts Ltd, 41 Brookfields Street, Newton
le Willows, Merseyside, WA1 29RA.
Tel: 09252 22091, Fax: 09252 20124

Scott Fabrication Ltd, Unit 12, Airport Ind.
Estate, Main Road, Biggin Hill, Westerham,
Kent, TN16 3BW. Tel: 0959 540340,
Fax: 0959 571008

Sematic UK Ltd, Sematic House, Hillam Road,
Bradford, BD2 1QP. Tel: 0274 394351,
Fax: 0274 393893

Sentinel Lifts Ltd, Unit 1, Abbey Park Ind. Estate,
Abbey Road, Barking, Essex, IG11 7RT.
Tel: 081-594 1461, Fax: 081-594 4628

Service Lift Co. Ltd, 142a Canbury Park Road,
Kingston-upon-Thames, Surrey, KT2 6LE.
Tel: 081-541 1676, Fax: 081-547 2749

Shorts (Lifts) Ltd, P.O. Box 258, Hillam Road,
Bradford, W. Yorks, BD2 1QR.
Tel: 0274 305066, Fax: 0274 736212

Standard Lift Ltd, Straddan House, Queen
Street, Lichfield, Staffs, WS13 6QD.
Tel: 0543 262850, Fax: 0543 258809

Temple Lifts Ltd, Hayward House, 329 Baring
Road, London, SE12 ODZ.
Tel: 081-857 8887/081-851 8900,
Fax: 081-851 4344

Thames Valley Lift Co. Ltd, Unit 15, Manor Farm
Estate, Flint, Clywd, CH6 5UY, Wales.
Tel: 0352 762521, Fax: 0352 762919

Thyssen Lift Components, 3-4 Lawrence Way,
Stanhope Road, Camberley, Surrey, GU15 3DL.
Tel: 0276 677177, Fax: 0276 23979

Trafalgar Lift Co. Ltd., 26-28 Havelock Walk,
Forest Hill, London, SE23 3HG.
Tel: 081-699 4397, Fax: 081-291 6538

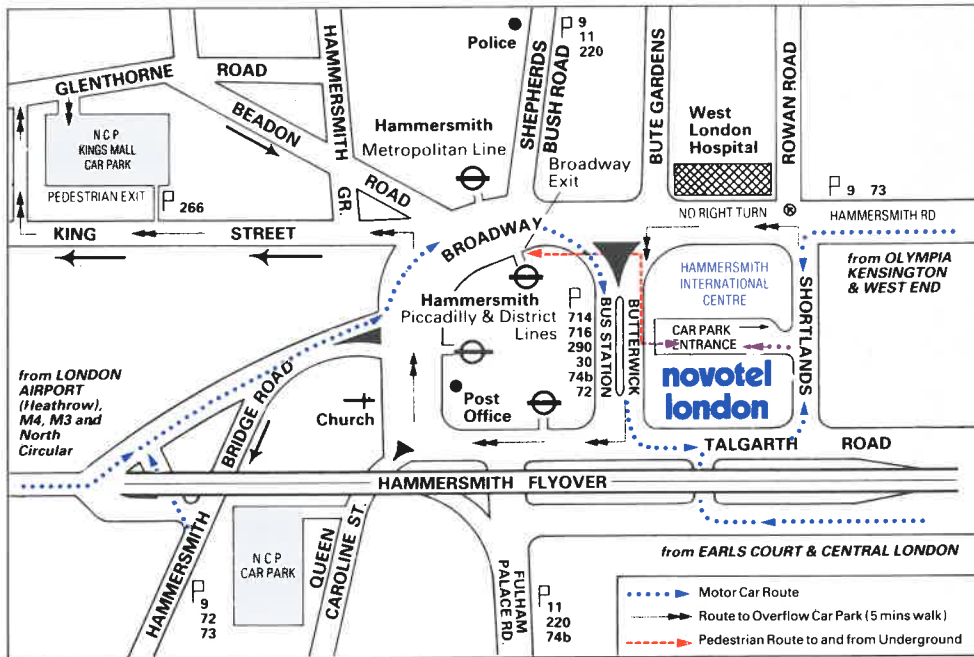
Trefil EUROPE Ropes Ltd, Lancaster Fields,
Crewe Gate Farm Ind. Estate, Crewe, Cheshire,
CW1 1FF. Tel: 0270 587728,
Fax: 0270 587913

True Brothers Manufacturing Ltd, Bakewell
Road, Loughborough, Leics, LE11 0QY. Tel:
0509 265383, Fax: 0509 269275

Wessex Medical Equipment Co. Ltd, Budds Lane,
Romsey, Hants, SO51 OHA. Tel: 0794 830303,
Fax: 0794 512621

Ziehl-EBM (UK) Ltd, 17-19 Richmond Road,
Dukes Park Ind. Estate, Chelmsford, Essex,
CM2 6TL. Tel: 0245 468555, Fax: 0245 466336

GENERAL INFORMATION



Organisers: The British Lift Association

Admission: Admission is free of charge by Registration Card from the BLA or any member company. All visitors must register at entry desks. The Organisers have the right to refuse admission.

Canvassing: Canvassing for orders by an unauthorised person is strictly prohibited and in any such case the right of expulsion will at once be exercised. The distribution or display of printed or other placards, handbills or circulars or other articles is prohibited, except by exhibitors on their own stands.

Cloakrooms: Cloakrooms and left baggage facilities are available near the main hotel entrance on the ground floor.

British Lift Association
 22-24 Greens End
 Woolwich
 London
 SE18 6JY